



# Cubeware Cockpit V6pro




Distributed by

**Treehouse Software**



2605 Nicholson Road, Suite 230 • Sewickley, PA 15143 USA  
Phone: 724.759.7070 • Fax: 724.759.7067  
Email: [sales@treehouse.com](mailto:sales@treehouse.com) • Web: <http://www.treehouse.com>

© 2011 Cubeware GmbH. Cubeware is a registered trademark of Cubeware GmbH. All other product names are trademarks of the respective manufacturers.



” *Thanks to Cubeware, our controllers have a better grip on our data. We now deliver a comprehensive portfolio of controlling services and answer arising questions in a flash.*

Rainer Schober,  
Director of Controlling at the KATHREIN Group

*With Cubeware Cockpit V6pro, we were able to implement every requirement our business users had in a single reporting solution. Best of all, we could design our reports just the way we wanted.*

Thomas Hrach,  
Director of Finance at Trenkwalder Personnel Services

# Cubeware Cockpit V6pro



- Analysis, planning, reporting and dashboarding.
- Designed for business professionals – from power to casual users.
- Compact, powerful, flexible front end.

Cubeware Cockpit V6pro unites all functions for analysis, planning, reporting and dashboarding in a single product that runs simultaneously in Windows and Web environments.

Business professionals create modern management reports, conduct detailed ad hoc analyses and publish information from many different data sources in a concise dashboard. Sophisticated export and distribution mechanisms help create highly efficient reporting processes.

Cubeware Cockpit V6pro is the ideal front end for multidimensional and in-memory platforms from Microsoft, IBM, Infor, Oracle and SAP. Through its open and flexible architecture, Cubeware solutions flexibly adapt to the changing needs of business professionals – from power to casual users on all levels of the enterprise.

# Take control of your numbers

## Analysis

Cubeware Cockpit V6pro offers a wide range of options for standard and ad hoc analysis. Business professionals can consolidate, visualize and display data from many different sources using a wide range of analysis techniques and leverage it to do their jobs more effectively.

### Analysis functions

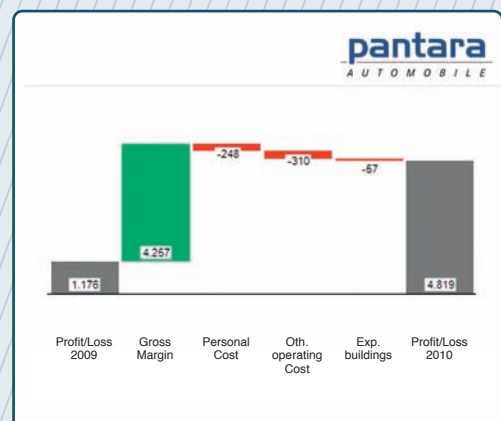
- Data navigation
- Drill through
- Drill down
- Drill across
- Roll up
- Slice and dice
- Fast selection
- Ranking
- Analytical formatting
- Sort functions
- Ad hoc calculations
- ABC analysis
- Top-ten and top-value rankings
- Business charts
- Waterfall charts
- Global dimensions
- Background aggregations
- Multi-selection dimension filters
- Geo analysis

Create standard benchmark and variance analyses or individual ad hoc assessments directly in Cubeware Cockpit V6pro – without any need for programming. Thanks to the software's intuitive user interface, your business professionals can independently create budget-actual comparisons broken down by region, sales consultants and time periods, assess the profitability of given products or customers, or even track down the causes of variances in key performance indicators, costs, ROI or cash flow.

Analyze, aggregate and further calculate any values you wish in self-service mode. As a result, you can easily follow your trail of thought and publish the results of your findings as reports in a separate folder or across your enterprise.



Easy to use and powerful –  
with Cubeware Cockpit V6pro  
you get both!



Waterfall chart that breaks down profitability based on select income sheet items.



Analytical formatting with colors, images and symbols deliver fast insight on critical KPIs and thresholds.

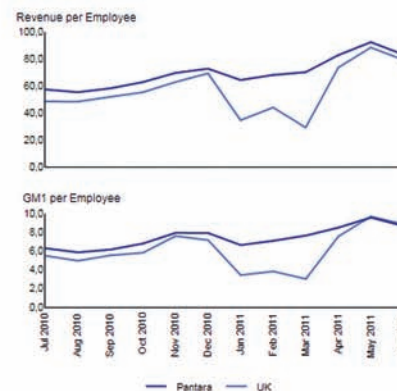
Cubeware Cockpit V6pro dynamically displays the contents of your report based on multiple selections from filters and lists. You can combine and analyze contents from several different data sources in a single report.

### Pantara Holding Employee Analysis Detailed Analysis of Business, Financial Ratios over time Monetary Values in K€

June 2011

	HDC	Revenue/ Empl.	Margin/ Empl.	HDC Sales	Revenue/ Salespers.	scost/SalesH
Pantara Holding	215	83.3	8,7	42	426,4	12,7
Motor Union Australia	25	129,7	13,5	5	648,5	18,8
Europes Finest Vehicles	9	140,9	14,1	3	422,7	14,6
Hermann's Hot Motors	9	218,4	23,5	2	987,2	25,2
Motorcars of UK	25	79,4	8,9	5	397,1	4,0
London's Premium Car	11	79,4	8,2	3	291,0	4,3
Manchesters United Cars	10	111,3	12,2	2	556,3	3,8
Rolling North Americas Inc.	47	86,1	9,6	12	376,5	9,6
Bob's Best Buys	10	114,8	10,5	3	382,8	7,0
Hollywood Motor Union	11	118,9	11,8	4	327,0	10,3
Laguna Beach Autocars	10	172,8	17,0	3	575,9	12,3
Maple Leaf Cars Ltd.	10	33,4	4,5	2	166,9	7,6
United European Car Dealers	109	74,9	7,9	20	408,1	15,2
Autohaus Karlberg	10	127,6	12,3	2	638,1	23,5
Autoplaza Italia S.A.	9	29,5	2,2	2	132,7	3,6
Giorgio's Millie Automobili	9	29,5	2,2	2	132,7	3,6
CW Cars Deutschland GmbH	45	104,1	11,0	9	520,8	4,8
Remaining Europe	101	756,5	81,7	19	4.017,9	145,0

Pantara Australia UK NorthAm. Europe



### Employees according to Departments of the Main Businesses

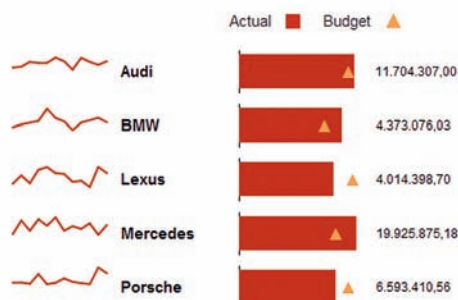


Employee per year Back

Flexibly navigate through tables and charts using drill-down, roll-up and slice and dice options.

Employee analysis over time based on key financial performance indicators.

### Key brands 12 month rolling on revenue



Rolling revenue statistics with budget-variance controls.

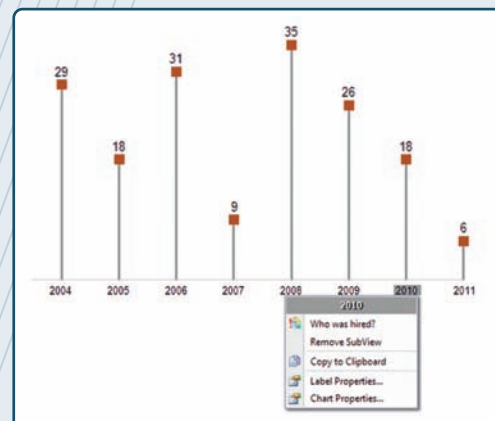


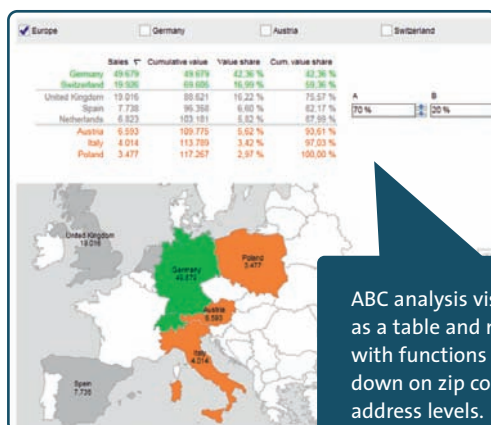
Chart showing new employees per year with context-sensitive, drill-across functions.

## Geo analysis

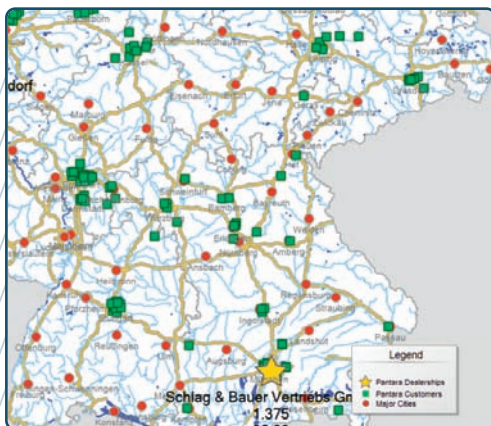
Use Cubeware Cockpit V6pro to present and evaluate data in geographical maps and bring a regional dimension into your analyses.

This feature makes it easier to identify time and place relationships and trends that you cannot easily see in standard charts or tables. Integrate these maps directly into a Business Intelligence dashboard, connect them with additional reports or enhance them with gauges as well as geo-positioned symbols and lines.

In addition to geographical maps, you can also use other visualization templates such as sketches of buildings, plants, machine shops, blue prints or traffic network maps – provided that these images have the standard file format as the default maps.



ABC analysis visualized as a table and map with functions to drill down on zip code or address levels.



Location analysis of offices and customers based on geographic information such as transportation routes, rivers, cities and regions.

## Reports

With Cubeware Cockpit V6pro you can automatically distribute budget drafts or analytical findings – from a simple standard report to a comprehensive briefing book packed with many different types of reports – all in your corporate design to a wide spectrum of individual recipients and groups.

- Create reports
- Iterate and export reports
- Distribute reports

The reports, analyses and dashboards that you create in Cubeware Cockpit V6pro serve as the starting point and the source of your reporting. If your target audience for a given report works directly with the software, you simply send them an e-mail to inform them about a new report which they can directly open after clicking a link and entering their personal login information.

You may also use Cubeware Cockpit V6pro to automatically support all of your report consumers – from top-level executives to local account managers – with targeted, timely and secure information. The software, which offers a wide range of export formats including Excel, Word, PPT, CSV, XML, HTML or PDF files and printouts, also supports sophisticated distribution mechanisms.

In addition to sending exported reports as an e-mail or to a printer, you may also save them to data directory or FTP server as well as publish them directly to a corporate portal.

## Report iteration

Using the iteration features in Cubeware Cockpit V6pro, you can generate different versions of the same report in order to communicate targeted information to specific users automatically or ad hoc. This way, you can efficiently provide all business unit managers in your company with custom sales information broken down by individual countries, account managers and product groups – without extra work on your part.



## Vast visualization options in a common design

Cubeware Cockpit V6pro delivers a wide range of capabilities to individually design dynamic reports, analyses and dashboards.

You can choose from many different layout components which can be combined any which way, anywhere you want, and as often as you wish. Best of all, you can group and synchronize any number of components into a single filter.

### Layout components

- Tables and charts in your choice of combinations, layouts and formats.
- Column, bar, line and area charts, radar images, doughnuts, funnels, gauges, as well as bubble and waterfall visualizations.
- A wide range of fonts, font sizes, colors and color palettes.
- Interactive map support.
- Dynamic formatting based on elements or values.
- Cell bars and gauges containing color gradients to visualize value proportions and thresholds.

If you want to create a view containing multidimensional or relational data, you can build the structures of the layout components quickly and easily via drag and drop. You can incorporate as many of these so-called Cube, SQL or MDX DataViews in a single report or dashboard to simultaneously present data that is stored in many different sources in a similar context.

You can use analytical formatting to apply user-defined gauges, color gradients, cell bars, rank columns or sorted values. This ensures that your users can keep a secure watch over critical numbers, defined thresholds and individual KPIs.

### Six steps to your first report

- 1 Select the report format
  - 2 Name your report
  - 3 Select a cube
  - 4 Choose a dimension
  - 5 Pick the display form
  - 6 Select the filter components
- ✓ Finished!

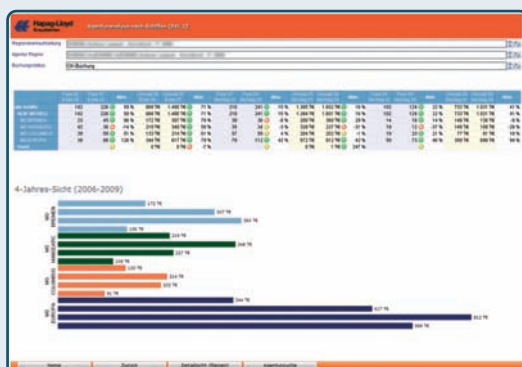
Depending on your individual taste, you can opt for a sleek design to maximize the information density or add colors, borders or shading to each of the layout components.

## Customer case studies

With Cubeware Cockpit V6pro, you can create custom reports with minimal maintenance as part of unified and standardized reporting solution.



■ Austrian Hail Insurance



■ Hapag Lloyd



■ Trenkwalder Personnel Services





Whether you are looking for standard reports or a complete solution for analysis, planning, reporting and dashboarding, Cubeware Cockpit V6pro provides a fast, powerful and easy-to-use solution.

Select and control report contents with filters which you apply to one or more report objects simultaneously. The displayed data can even stem from different sources, for example, Microsoft SQL Server and SAP BW.

Clearly visualize deep data structures. With Cubeware Cockpit V6pro you can dynamically drill up or down to show or hide additional information. If desired, you can even highlight individual values, add comments or make ad hoc calculations.

## Dashboards

Create dashboards that condense masses of information to deliver fast insight on key performance indicators, different projects or even multiple reports.

Cubeware Cockpit V6pro offers a wide range of features and techniques for creating centralized or personalized dashboards.

Each dashboard that you create in Cubeware Cockpit V6pro stems from multiple analytical components. Using the layout wizards, you can easily combine these components with headlines, buttons and filters as well as context-sensitive report or filter links for dynamic usability. The data which you see in the dashboard can stem from any number of different data sources. You can also integrate or link to content from websites, text files, images and other applications.

Design and position the individual dashboard components anywhere and anyway you wish. These components automatically scale to fit the used part of the screen.

Use prebuilt templates or the easy, flexible design features to create reports that reflect your corporate design across all reporting levels.

### Pantara Holding Management Info-Board Development per June 2011 and over the last 12 months Values in kEUR

Profit and Loss

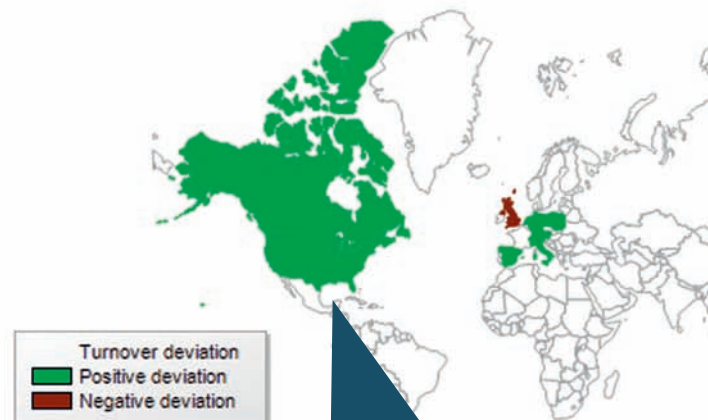
Pantara Holding

June 2011

	Actual	Act-Bud	%	AY-F
Revenues	13.419	-1.921	↓	
Sales Commission	75	10	↓	
Car purchases	12.042	-1.830	→	
<b>Gross Margin</b>	<b>1.302</b>	<b>-101</b>	↓	
Other operating cost	506	399	↓	
Expenses for buildings	464	13	↓	
<b>Other operating cost</b>	<b>970</b>	<b>412</b>	↓	
Wages	88	6	↓	
Salaries	450	-10	→	
Other personal cost	82	82	↓	
<b>Personnel Cost</b>	<b>620</b>	<b>78</b>	↓	
<b>Profit / Loss</b>	<b>-287</b>	<b>-591</b>	↓	

Revenue deviation to previous year of  
Pantara-Regions (Northamerica, UK, Rest Europe,  
Australia

World Custom

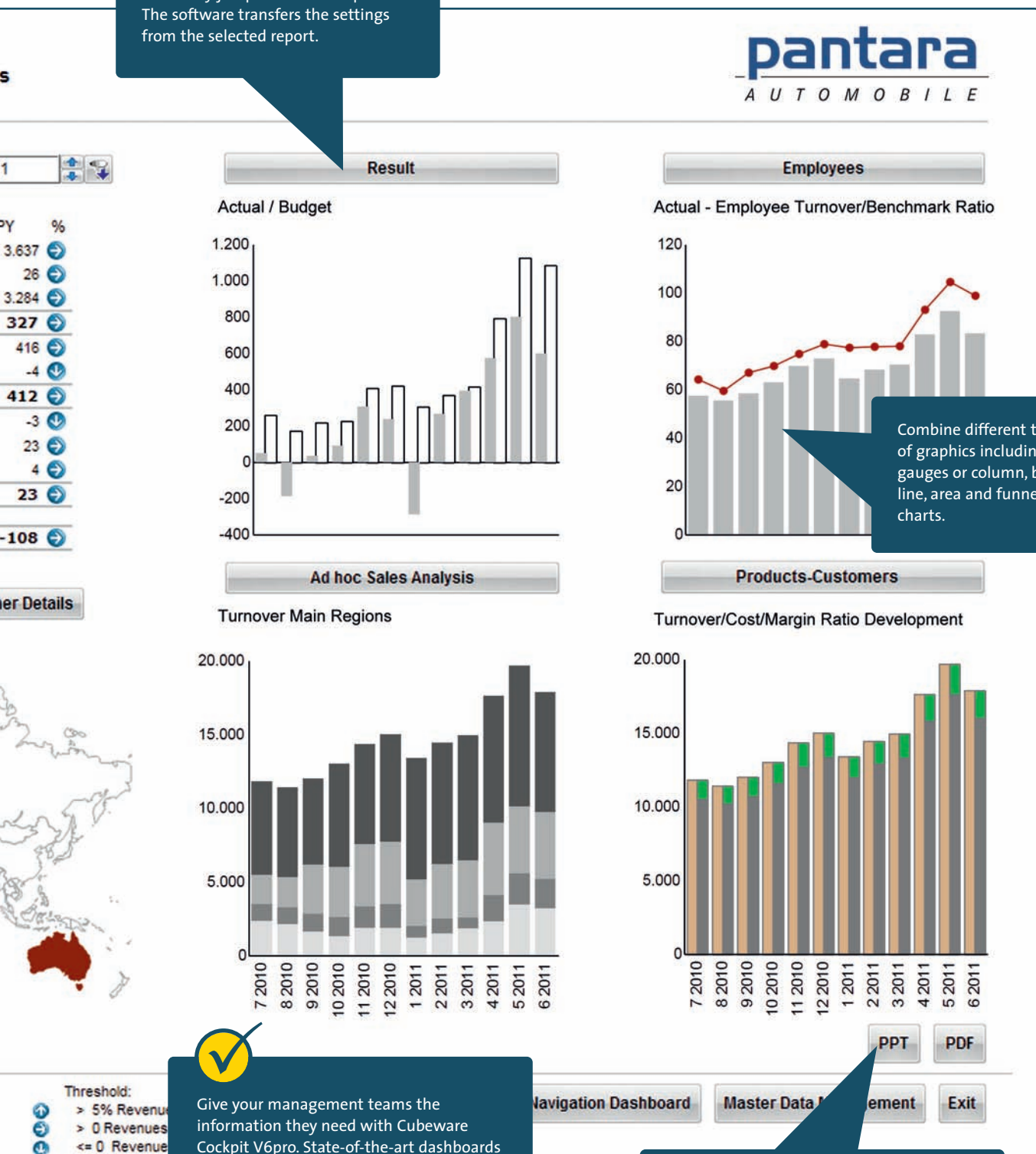


Use analytical formatting to gain fast insight on regional developments and relationships. Although the software automatically updates the legend contents, you can also opt to modify them as well.





Click on context-sensitive report links to directly jump to detailed reports. The software transfers the settings from the selected report.



Combine different types of graphics including gauges or column, bar, line, area and funnel charts.

Print or export your reports, load new data, open external programs or start other functions using action buttons.



# Planning

Cubeware Cockpit V6pro offers built-in features to make your enterprise planning processes more effective – starting from sales, revenues or cost planning to integrated profit and loss, balance sheet and financial planning.

Cubeware Cockpit V6pro supports multiple budget drafts as well as different planning approaches such as top-down, bottom-up or a combination of the two.

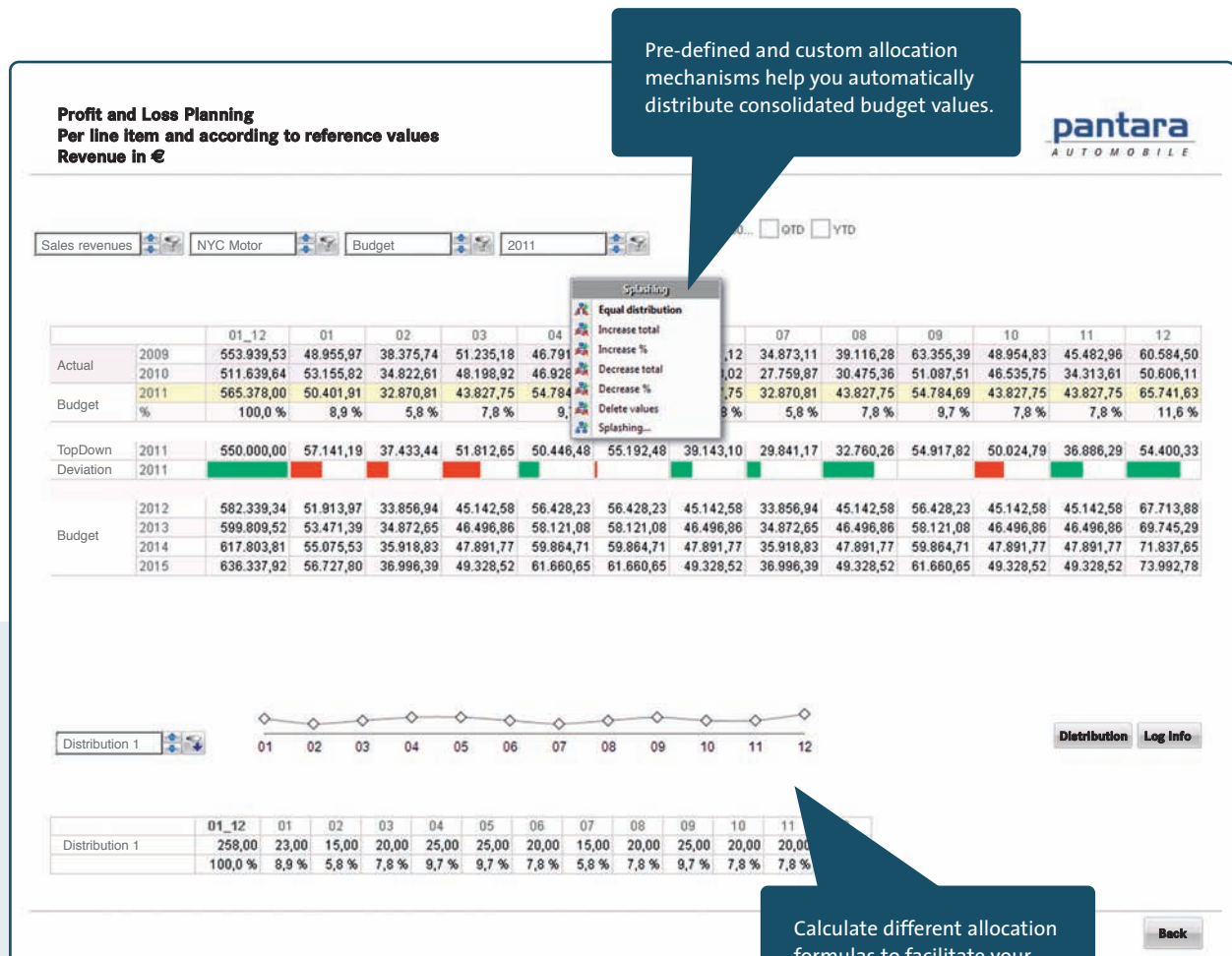
Multiple employees can enter their budget data simply and securely. Intelligent allocation mechanisms automatically distribute consolidated budget values while workflow components facilitate teamwork.

Thanks to the central, structured data storage, you can save work in progress or different budget versions to capture the historical development of your budget at any time. You can later combine budget and actual data to analyze variances, assess developments over time, create forecasts or run 'what-if' analyses.

## Planning support

- Automatic allocation of values.
- Built-in workflow support.
- Comments.
- Relational write back (e.g. for entering master data).
- Web client for easy, global access.
- Rich analytical options.

Cubeware Cockpit V6pro automates the planning and budgeting processes to minimize complexity and maximize quality.



This forecast based on actual data shows the planned budget-actual variances as well as the variances to the previous year.



# Collaboration

Cubeware Cockpit V6pro is the ideal Business Intelligence front end for working as a team. It combines rich capabilities for analysis, planning, reporting and dashboarding in a single product and ensures a single point of truth. In addition, its intuitive handling makes it easy to use for all business professionals – regardless if they are power or casual users across all business departments and functions.

---

## Single point of truth

- One front end for all requirements.
  - One environment for power and casual users.
  - Common pool of data.
  - Uniform views on business data.
  - Reliable information for all users.
  - Commonly used data, analyses and reports.
  - Central administration of users and access rights.
  - Export features to support report consumers.
  - Multilanguage report environments for international businesses.
  - Central storage of data and reports.
- 

Whether you want to run individual analyses, access central reports and dashboards, or simply improve collaboration in your enterprise planning process, you can do all that and more with Cubeware Cockpit V6pro. Since all users work in one and the same environment, you can ensure that they have access to a consistent pool of information. What's more, the software works identically in both Windows and Web environments.

Once you have created a report, you can use the same report again and again and publish it to various user groups for individual analysis. Whether they are located in the same office or scattered throughout the world, users can easily work with your reports and access one and the same pool of data. Sophisticated user information and access rights control who can view which data, reports and dashboards. In addition, you can use a wide range of export and distribution options to share reports and analytical findings with report consumers who have no access to Cubeware Cockpit V6pro.



## User administration and access rights

Cubeware Cockpit V6pro centrally stores all reports, report environments, users and access rights in Cubeware Team Server. This repository defines which users or groups can see which data and views as well as access which functions.

## Multilanguage support

Cubeware Cockpit V6pro's user interface and menu navigation are available in English or German. You can, however, create and display the reports themselves in any language. To create multilanguage reports, you simply need to translate the respective report objects – such as the members and attributes in your OLAP databases, the names of dimensions, cubes and reports, as well as any comments, titles, and headlines – and store them centrally. Once you have this information, you can immediately display any report in the desired language.

In addition, you can also define the default language for each user or user group directly in Cubeware Team Server. This way, the software will automatically open the report environment in the set language.

## Export and distribution

Export reports, dashboards, and budgets to your choice of Excel, Word, PPT, PDF, CSV, XML or HTML formats. To share these reports, distribute the reports automatically at a set time or send them spontaneously as an e-mail or to a data directory, FTP server, printer or an external program.



Automatically distribute reports with consistent information to all decision-makers in your company. Cubeware Cockpit V6pro provides many different ways to efficiently supply your users with reliable information.

# User Interface

## Windows and Web

When you create reports and dashboards in Cubeware Cockpit V6pro, you can access or modify them either in Windows or Web environments with 1:1 interoperability. As a result, users can access the same reports, environments and features regardless if they are working at the office, from home or on the road.

## Portals

Whether you want to link to individual offline reports, embed reports with full analytical functions or integrate interactive applications, Cubeware Cockpit V6pro offers a full solution for portal integration.

In addition to leading portal technologies from Microsoft, IBM and SAP, the software also supports standard Java-based portals as well as custom solutions based on ASPX/PHP or ASPX/.Net. Users can either log in using a Single Sign On (SSO) based on NTLM and Kerberos technologies or connect to custom authentication solutions.

## Mobile

Use the Cubeware Cockpit V6pro Web client on mobile devices that contain modern browsers (e.g. Apple iPad).





# Architecture

The open architecture in Cubeware Cockpit V6pro gives you unparalleled flexibility in using multidimensional and relational databases, choosing web servers and browsers or even working with different user interfaces.

Cubeware Cockpit V6pro bundles all of the functions you need for analysis, planning, reporting and dashboarding in a single product. Through the centralized server components Cubeware Team Server V6pro and Cubeware Web Enabler, users can automatically access all reports and report environments across all media – without any extra administrative work on your part.

Use your choice of

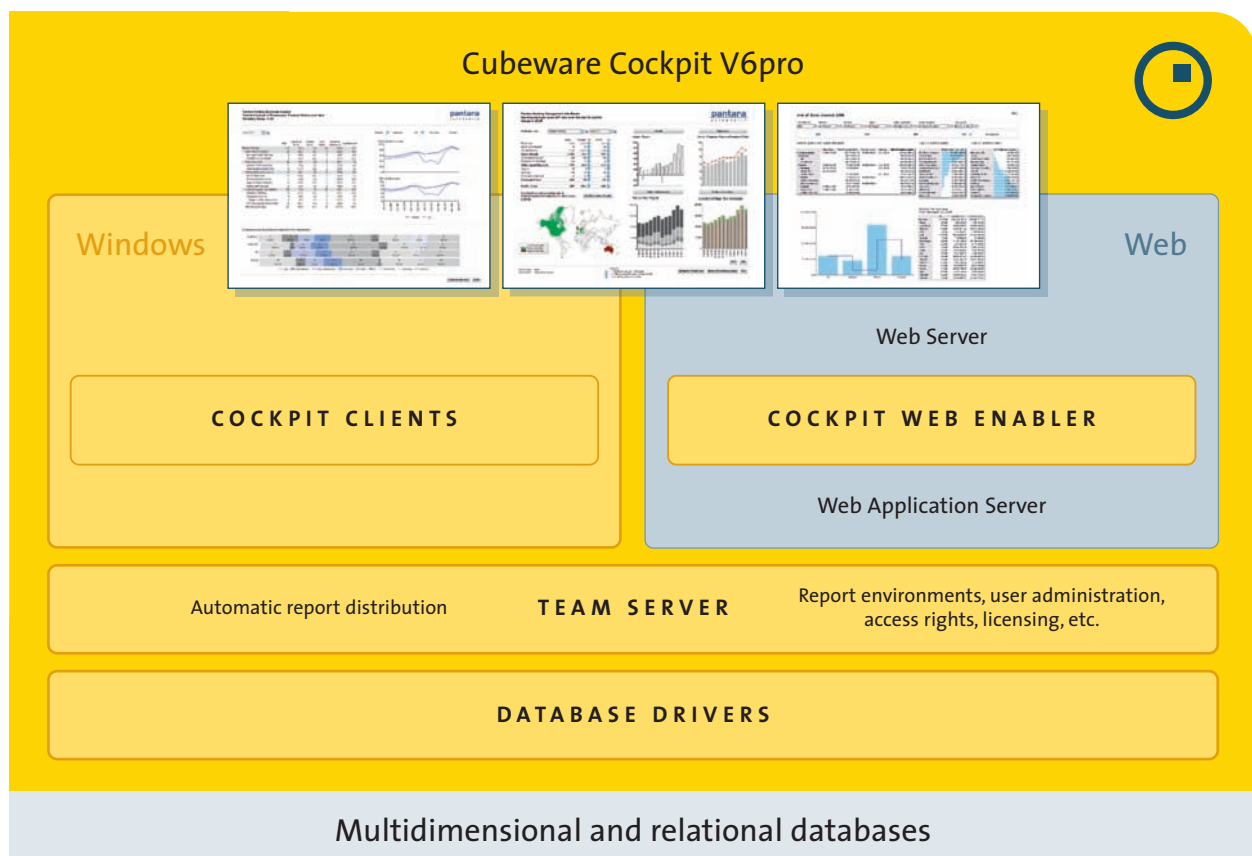
- Data
- Databases
- Web servers
- Browsers
- User interface

Achieve more consistency through

- ONE product for all users
- Coherent technology
- Common user interfaces

The architecture of Cubeware Cockpit V6pro offers coherent technology, identical user interfaces and 1:1 report interoperability in Windows and Web environments. Comprehensive export features supply users with current information – even if they don't have direct access to the software. Best of all, you do not need to administer the same data or reports multiple times.

Combine analysis, planning, reporting and dashboarding in a single solution that works identically in Windows and Web environments.





Cubeware Cockpit V6pro empowers users to access and work with reliable information – at any time and from anywhere – whether at the office, at home or on the road.

## Data

With Cubeware Cockpit V6pro users can easily access a wide range of information stored in multidimensional and relational sources.

In addition to querying data that are stored in multidimensional structures, you can also access data using SQL or MDX queries. You can even display and process the results at the same time in a single report or dashboard.

You can also integrate data from external applications or the web as well as images and comments into your analyses and reports.

## Databases

Cubeware Cockpit V6pro is the ideal front end for multi-dimensional and in-memory platforms from Microsoft, IBM, Infor, Oracle or SAP.

You can use the complete functionality of Cubeware Cockpit V6pro in combination with any of these platforms. In fact, you can even integrate multiple databases at the same time to visualize and analyze information in a single report or dashboard – even if it is stored in different databases.

### Multidimensional databases

- Microsoft SQL Server Analysis Services
- Infor PM OLAP
- IBM Cognos TM1
- Oracle Hyperion Essbase
- SAP NetWeaver Business Warehouse (SAP BW)

If your data storage requirements should ever change over time, you can easily use Cubeware Cockpit V6pro in combination with a new database and reuse your existing report environments.

## Web servers and browsers

To use Cubeware Cockpit V6pro in the web, you do not need any additional software. You can even select the web server and browser of your choice.

The web application of Cubeware Cockpit V6pro runs directly on the web server and is connected with Cubeware Team Server and your respective OLAP databases.

You can use Microsoft IIS, IBM Web Sphere, Apache Tomcat, Oracle (BEA) WebLogic or SAP NetWeaver Web (Java) Application Server Web servers. The software supports the latest versions of Internet Explorer, Chrome, Firefox and Safari for Windows.

## Technology partners



## Controlling Services

Publish information beyond your organization. You can use Cubeware Cockpit V6pro for benchmarking, campaign reporting as well as supporting the information needs of individual franchise owners, partners, dealerships or stores.

The open architecture, comprehensive web capabilities and the flexible access rights and licensing in Cubeware Cockpit V6pro help you implement modern and innovative information platforms. As a result, you can deliver highly informative reports and analyses as part of your value-added service offerings.





## Front end for SAP BW

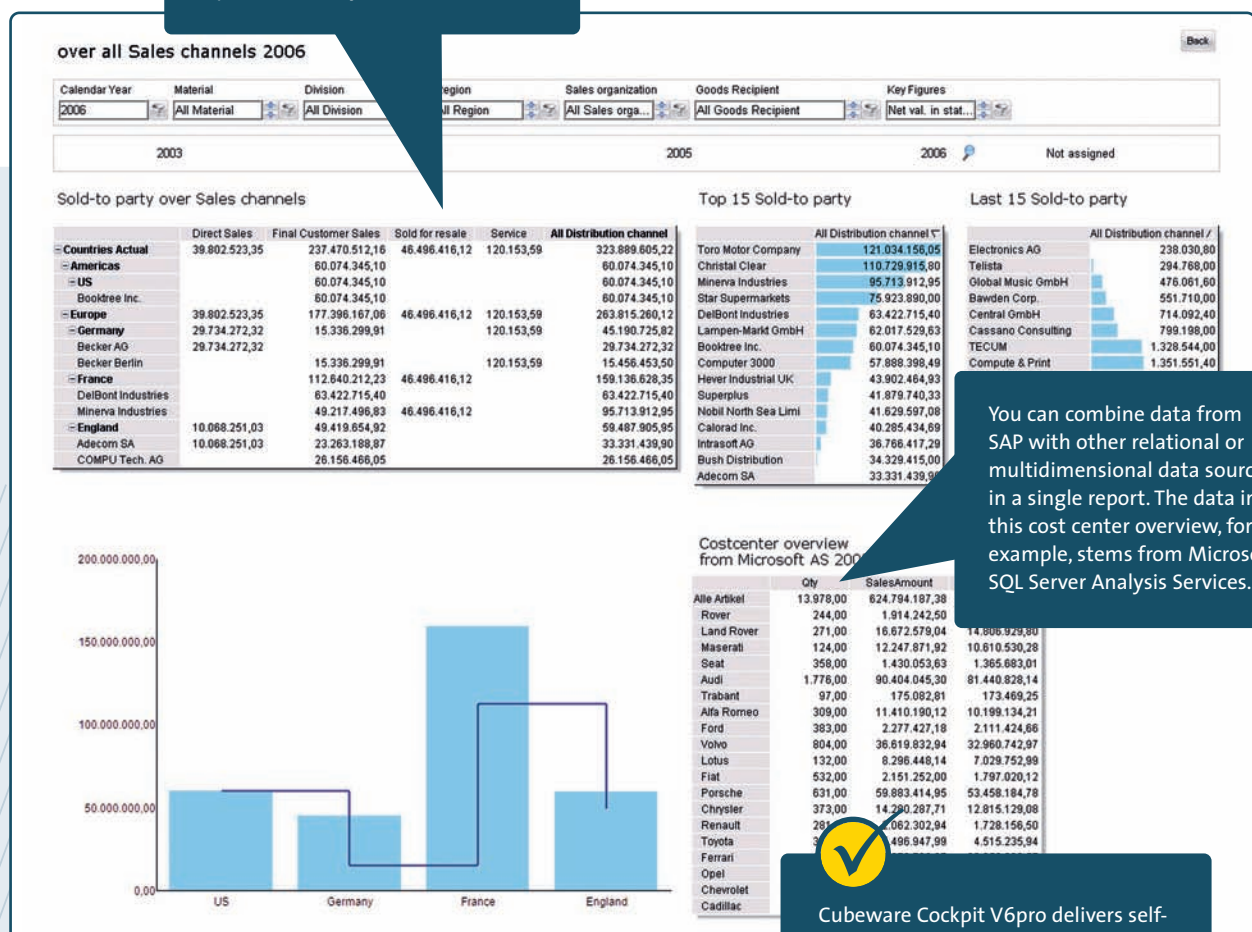
Cubeware Cockpit V6pro directly delivers SAP data to BI users as part of a data mart solution based on SAP R/3 or SAP BW or as a third-party front end for SAP BW.

If you directly use Cubeware Cockpit V6pro as a front end for SAP BW, you can access SAP systems using the SAP BW analysis interface OLAP BAPI. In this case, you can build a pool of data using SAP BW InfoProviders (e.g. InfoCubes, MultiProviders and DataStore Objects) or incorporate existing queries with complex calculation rules and variables.

You can directly access SAP BW data and structures without needing an intermediate layer for creating reports and analyses.

## Facts and figures

- Direct access to SAP BW InfoProviders and queries.
- No separate data storage.
- Certification for SAP BW / SAP NetWeaver BI.
- Standard and ad hoc analysis as well as report design, administration and creation by business users.
- Wide range of chart, layout and formatting options.
- 1:1 interoperability in Windows and Web environments.
- Integration of SAP and non-SAP data (e.g. relational und multidimensional) in a single report.
- Connection to one or more OLAP databases including Microsoft SQL Server Analysis Services, Infor PM OLAP, IBM Cognos TM1 and Oracle Essbase.
- Automatic and event-driven report distribution to Microsoft Excel, PowerPoint, Word, XML, HTML, PDF and even printers.



Sales dashboard containing cost center information and a top-flop analysis.

You can combine data from SAP with other relational or multidimensional data sources in a single report. The data in this cost center overview, for example, stems from Microsoft SQL Server Analysis Services.



Cubeware Cockpit V6pro delivers self-service BI and fast answers to current questions.

## Overview

Cubeware Cockpit V6pro offers a wide range of capabilities to support business professionals in analysis, planning, reporting and dashboarding. The software, which offers 1:1 interoperability in both Windows and Web versions, uses Cubeware Team Server V6pro as a central repository for all users, user groups and report environments.

### **The functionality of Cubeware Cockpit V6pro includes:**

State-of-the-art graphical interfaces, professional chart designs, combined chart types, drag-and-drop layout design, background dimensions with filters, fast selection, global dimensions, context-sensitive report designs, data navigation with aggregations, calculated and formatted members, ABC analyses, gauges, ranking, sorting features, budget data entry, intelligent data allocations, drill-through, suppression of zeros in rows and columns, integrated online help, integration of any number of external data sources, multi-level access rights, individual folder structures, static and dynamic container elements, individual displays of attributes, reports conform with corporate design guidelines, integrated messaging system, language settings, report exports to various formats (e.g. Office, HTML, XML, CSV, PDF), print previews, support for multiple OLAP databases, as well as Cube, MDX and SQL DataViews, and much more.

### **Dashboards with different sources**

Create reports and dashboards with more than one DataView (e.g. Cube, SQL or MDX). This way, you can integrate data from several sources and views in a single report, visualize them in tables, charts, gauges or scales and synchronize them with filters. You can show and accurately compare data from different DataViews and sources on a single gauge or scale, which you can customize using a wide range of pointers, markers or bars. In addition, you can display each report or immediately start Cubeware Cockpit V6pro in full screen mode, for example, to create information kiosks or executive information systems.

### **Automatic report distribution**

Cubeware Cockpit V6pro supports a wide range of iterative export functions into Excel, Word, PPT, CSV, XML, HTML and PDF formats or to printers. In addition to opening export definitions online in Cubeware Cockpit V6pro, you can also combine them to create export jobs which you can automatically execute at a scheduled time on Cubeware Team Server V6pro. You can subsequently distribute the exported files throughout your company as an e-mail or printout or save them to FTP directories or portals as XML files.

### **Integrated web access**

You can access the complete functionality of Cubeware Cockpit V6pro – including report definitions and data entry features – through the Web. Users can use or modify the same reports and analyses regardless if they are working from Windows or Web environments. The software supports all leading Internet browsers including Internet Explorer, Firefox, Chrome and Safari for Windows). In order to use the integrated web access you must first install the Cubeware Web Enabler components as a Web Application Server.

### **Interactive map support**

With Cubeware Cockpit V6pro, you can now use maps to dynamically visualize and analyze data in reports and dashboards. This way, you can spot relationships over time or regional trends which would be difficult or even impossible to identify with just numbers alone.

In addition to adding gauges, geo-positioned symbols and lines, you can also combine individual regions (e.g. sales districts) on your map to create so-called 'super shapes'. Cubeware Cockpit V6pro supports map images in Shapefile format. You can also purchase additional map files from specialized geo-marketing vendors. Cubeware has multiple partners that offer map material for use in Cubeware software at special rates.

### **Online access to SAP**

Using Cube DataViews, you can access, analyze and export InfoProviders (e.g. InfoCubes, MultiProviders, DataStore Objects) and queries in SAP Business Information Warehouse (SAP BW) online. In addition, you can use SQL DataViews to configure queries on SAP BAPIs (Business APIs) and SAP Data Dictionary tables and visualize the results in Cubeware Cockpit V6pro.



## Technical data

Cubeware Cockpit V6pro supports the following client operating systems: Microsoft Windows XP (Home or Professional), Microsoft Vista and Microsoft Windows 7. Minimum memory requirements: 60 MB hard drive space and 512 MB RAM; Cubeware recommends more depending on the size of the OLAP data model and reports.

Cubeware Team Server V6pro supports the following server operating systems: Microsoft Windows XP Professional and Microsoft Windows Server 2003 or 2008 (each with the most current service packs). Minimum memory requirements: 100 MB hard drive space and 1 GB RAM; more hard drive space and RAM is highly recommended.

Supported Web browsers: the latest releases of Internet Explorer 7 and 8, Chrome, Firefox and Safari for Windows

Supported Web servers: Microsoft IIS 5.0 or IBM WebSphere 5.0 and higher, Apache Tomcat 5.0 and higher, Oracle (BEA) WebLogic 8.1 and higher or SAP NetWeaver Web (Java) Application Server Version 7.0 and higher. Memory and processor requirements: In small installations (e.g. up to 10 concurrent users) you can run the Web Server, Web Application Server and Cubeware Team Server on the same server. If your applications support a larger number of users, we recommend that you split the load on two or more servers. In particular, servers for the Web Application Server should have adequate memory and processing power. If you have any questions regarding system planning and configuration, the Cubeware team would be happy to help.

### OLAP databases

Microsoft Analysis Services 2000/2005/2008  
Infor Alea PM OLAP 10.x  
IBM Cognos TM1 9.1.x/9.5.x  
Oracle Hyperion Essbase 6.5/9.3/11  
Jedox Palo 1.5/2.0/2.5/3.1 SR1  
SAP Business Information Warehouse 3.0b and higher



With Cubeware Cockpit V6pro, power users, casual users and report consumers work in one and the same reporting environment; the only difference is their access rights.



Cubeware is a leading provider of Business Intelligence software and solutions. The company serves customers through seven direct offices in Central Europe as well as a growing international network of certified business partners.

Cubeware's product portfolio includes a modern BI front end (Cubeware Cockpit V6pro), powerful ETL tool (Cubeware Importer) as well as a certified interface to SAP systems (Cubeware Connectivity for SAP® Solutions).

Cubeware software is designed for midsize companies as well as departments in large corporations. The solutions are easy to use, fast to implement and fully scalable. The integration with leading BI technologies from Microsoft, Infor, IBM Cognos, Oracle and SAP ensures maximum flexibility.

Cubeware has customers from a wide range of industries including Adelholzener Alpenquell and Danone Austria (food and beverages), Bertelsmann Stiftung (non-profit organization), comdirect bank (financial services), Contitech Elastomer (manufacturing), Frosch Touristik and Hapag Lloyd Kreuzfahrten (tourism), VA Intertrading (wholesale), Viessmann (heating) and Zwilling (consumer goods).

© 2011 Cubeware GmbH. Cubeware is a registered trademark of Cubeware GmbH. All other product names are trademarks of their respective manufacturers. Content subject to change. 01.11.





Distributed by

**Treehouse Software**

2605 Nicholson Road, Suite 230 • Sewickley, PA 15143 USA  
Phone: 724.759.7070 • Fax: 724.759.7067  
Email: [sales@treehouse.com](mailto:sales@treehouse.com) • Web: <http://www.treehouse.com>

© 2011 Cubeware GmbH. Cubeware is a registered trademark of Cubeware GmbH. All other product names are trademarks of the respective manufacturers.

